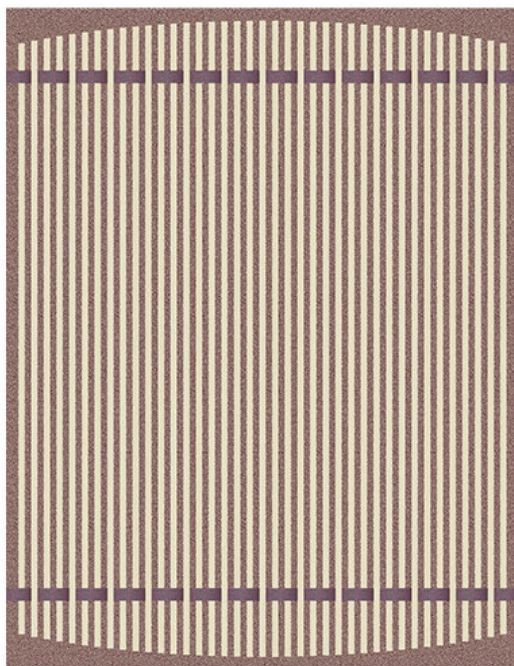


BELAY 百吉

Studio Roderick Vos



心似双丝网，中有千千结。朴素的线条，编织出诗意与优雅。

表面效果

50% 新毛 +50% 人棉丝



配饰
R200-207

2300*3000mm
90.6*118.1"

2000*3500mm
78.7*137.8"

2680*3500mm
105.5*137.8"

2000*4000mm
78.7*157.5"

3060*4000mm
120.5*157.5"

2500*4000mm
98.4*157.5"

3450*4500mm
135.8*177.2"

2500*4500mm
98.4*177.2"

HC28